

LEGEND

	< 8		< 8 ft		Green Passing		Green		AIS Green CAN
	8 - 9		8 - 9 ft		Red Passing		Red		AIS Red NUN
	9 - 9.5		9 - 10 ft		Green Crossing		Green		Green CAN
	9.5 - 10		10 - 12 ft		Red Crossing		Red		Red NUN
	10 - 12		River Mile		Sailing Line		Junction		
	12 - 14		BSNP Structure						
	14 - 16		Levee						
	> 16								

Scale: 0 312.5 625 937.5 1,250 2,500 Feet

NOTES:
 Horizontal Coordinate System:
 World Geodetic System of 1984 (WGS84), projected to the
 Universal Transverse Mercator (UTM) Zone 15 North.
 Distance units in U.S. Survey Feet

Vertical Datum:
 Soundings are shown in feet and indicated depths
 are referenced to water surface at time of collection.

The information depicted on this map represents the results of a survey
 conducted on the date indicated and can only be considered
 to represent the general condition existing at that time.

The location of navigation aids are based on and provided by
 the U.S. Coast Guard.

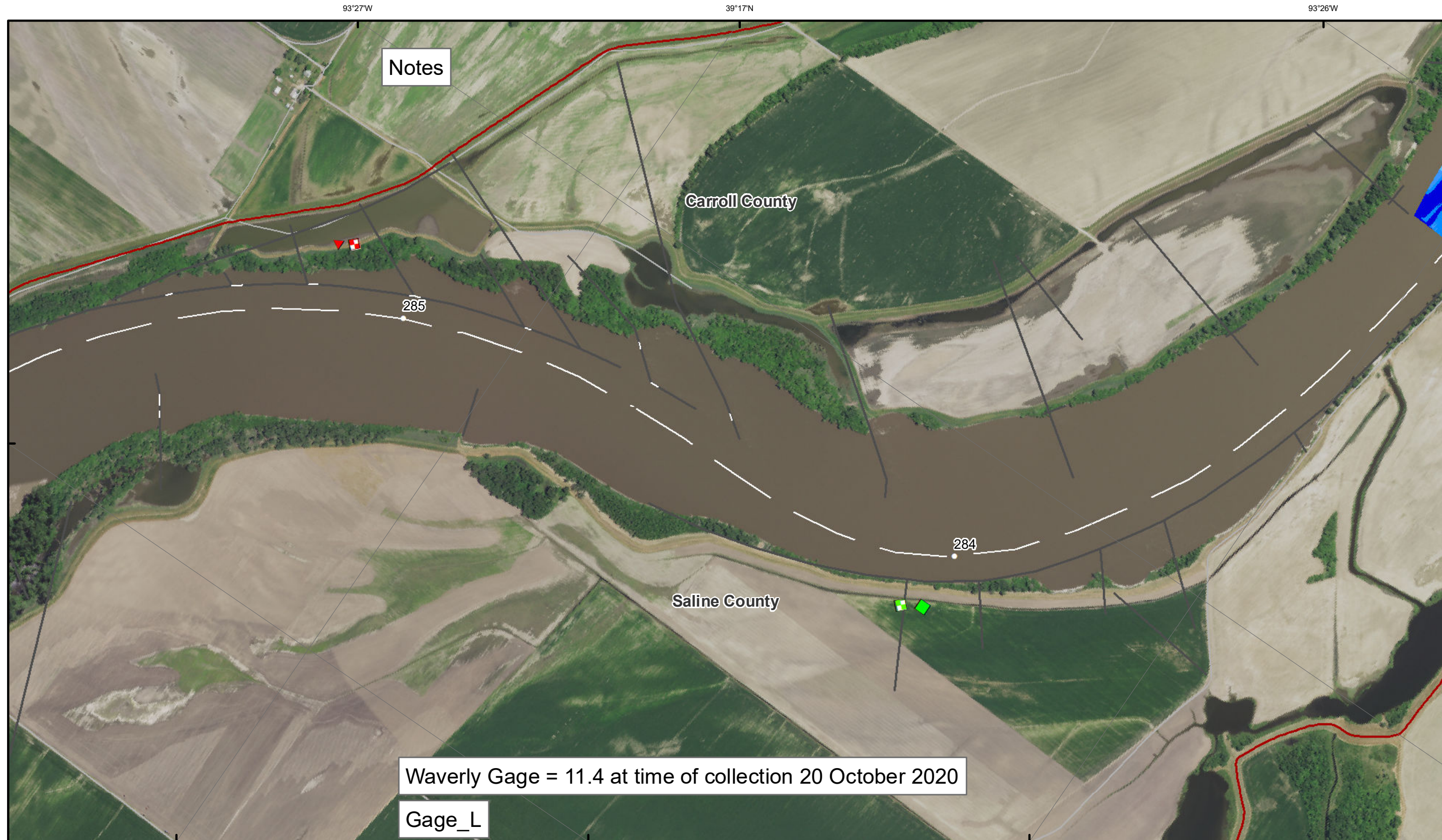


DISCLAIMER: The U.S. Army Corps of Engineers (USACE) provides this information for informational purposes only. The USACE does not warrant, represent, or guarantee the accuracy, completeness, or reliability of the information provided. The USACE is not responsible for any errors or omissions in this information. The user assumes all liability for the use of this information. The USACE is not responsible for any damages, including consequential damages, arising from the use of this information. The USACE is not responsible for any claims, damages, or liabilities, including consequential damages, arising from the use of this information. The USACE is not responsible for any claims, damages, or liabilities, including consequential damages, arising from the use of this information.

KANSAS CITY DISTRICT MISSOURI RIVER AREA OFFICE	
Submitted By:	MRAO
Reviewed By:	MRAO
Checked By:	MRAO

Survey Information
 MO_03_LMR
 MO_03_LMR_20201020_CS_281_5_283_0_SORT
 20 October 2020

Sheet Number
 34 of 42



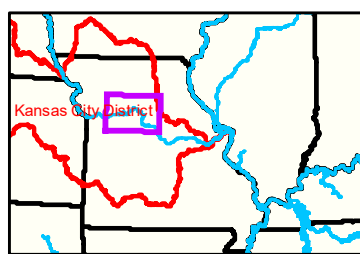
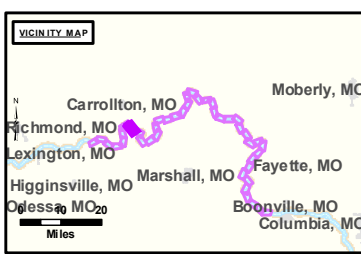
Notes

285

284

Waverly Gage = 11.4 at time of collection 20 October 2020

Gage_L



LEGEND

	< 8		< 8 ft		Green Passing		Green		AIS Green CAN
	8 - 9		8 - 9 ft		Red Passing		Red		AIS Red NUN
	9 - 9.5		9 - 10 ft		Green Crossing		Red		Green CAN
	9.5 - 10		10 - 12 ft		Red Crossing		Red		Red NUN
	10 - 12		River Mile		BSNP Structure		Junction		
	12 - 14		Sailing Line		Levee				
	14 - 16								
	> 16								

Buoy

- AIS Green CAN
- AIS Red NUN
- Green CAN
- Red NUN

Scale: 0 312.5 625 937.5 1,250 2,500 Feet

NOTES:
 Horizontal Coordinate System: World Geodetic System of 1984 (WGS84), projected to the Universal Transverse Mercator (UTM) Zone 15 North. Distance units in U.S. Survey Feet.
 Vertical Datum: Soundings are shown in feet and indicated depths are referenced to water surface at time of collection.
 The information depicted on this map represents the results of a survey conducted on the date indicated and can only be considered to represent the general condition existing at that time.
 The location of navigation aids are based on and provided by the U.S. Coast Guard.



DISCLAIMER: The U.S. Army Corps of Engineers (USACE) provides this information as a service to the public. It is not intended to be used for any purpose other than that for which it was intended. The USACE makes no warranty, express or implied, regarding the accuracy, reliability, or completeness of the information. The user assumes all liability for any use of the information. The USACE is not responsible for any damage or loss resulting from the use of this information. The USACE is not liable for any damage or loss resulting from the use of this information. The USACE is not liable for any damage or loss resulting from the use of this information.

KANSAS CITY DISTRICT MISSOURI RIVER AREA OFFICE	
Submitted by:	MRAO
Reviewed by:	MRAO
Checked by:	MRAO

Survey Information
 MO_03_LMR
 MO_03_LMR_20201020_CS_281_5_283_0_SORT
 20 October 2020

Sheet Number
 35 of 42